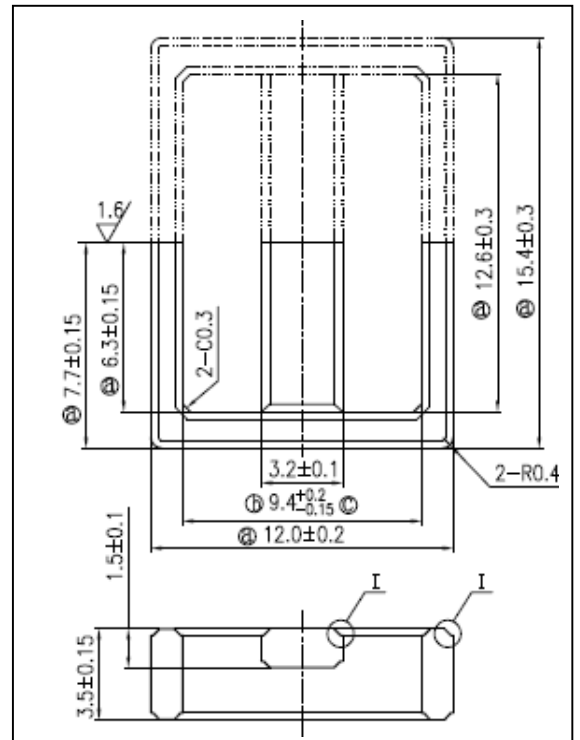


CORE SETS

Effective core parameters

SYMBOL	PARAMETER	VALUE	UNIT
$\Sigma (1/A)$	core factor (C_1)	5.11	mm^{-1}
V_e	effective volume	196.5	mm^3
l_e	effective length	31.7	mm
A_e	effective area	6.2	mm^2
W_t	mass of core set	≈ 1.5	g



Characteristic

GRADE	AL (nH/N^2)	μ i
		$f=10\text{kHz}$ $U=0.25\text{V}$
R7K	$830 \pm 25\%$	≈ 7000
R10K	$1050 \pm 30\%$	≈ 10000