

HSF

NOTES:
 Rated Current: 0.5~1.0 AMP. Δ
 Contact Resistance: 25m Ω Max.
 Withstand Voltage: 500V
 Insulation Resistance: 10000M Ω Min.
 Operation Temperature: -55°C to +125°C

Contact Material: Phosphor Bronze
 Contact Plating: Sn and Au over Ni
 Tail Material: Phosphor Bronze
 Tail Plating: Sn over Ni
 Main Body Material: LCP
 CAP Material: LCP

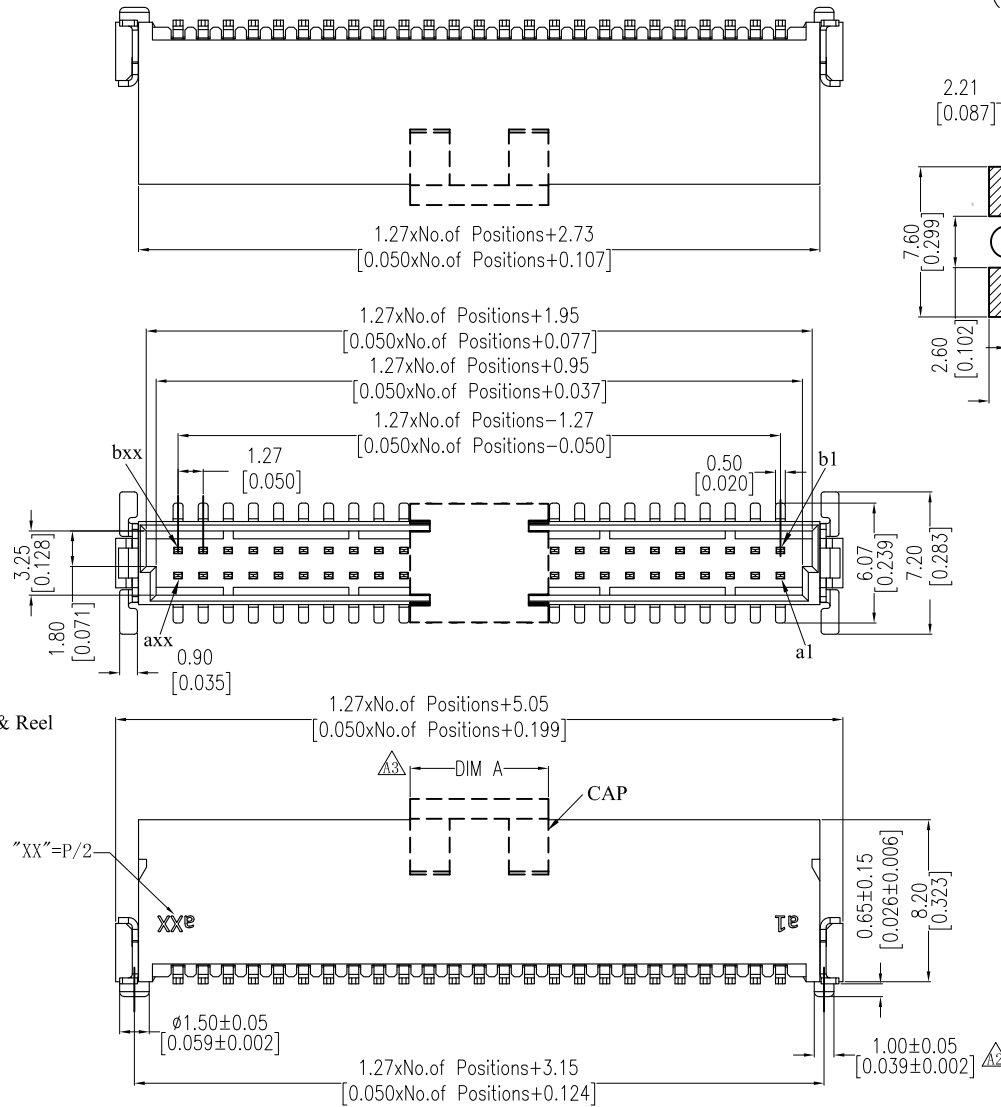
Ordering Information

3910-P XXX - 082 M XX W R 1

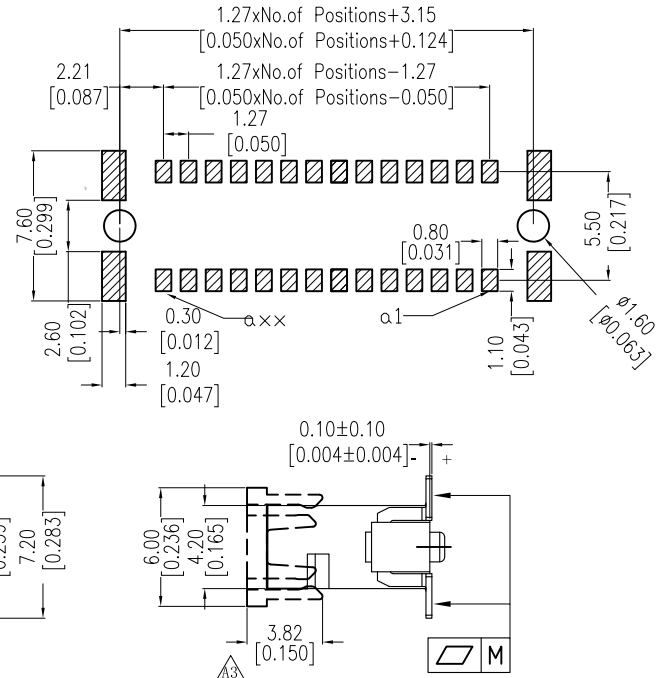
No. of Pins
 010: 10 Pin
 020: 20 Pin
 }
 100: 100 Pin

Plating
 S0=Gold Flash/Tin
 S1=3U" Au/Tin
 S2=5U" Au/Tin
 S3=10U" Au/Tin
 S4=15U" Au/Tin
 S5=30U" Au/Tin

Package
 R: Tape & Reel



Recommended P.C.B Layout (Top Side)
 (PCB BOARD TOLERANCE \pm 0.05)



PIN	M
10~40PIN	0.12
42~100PIN	0.15

P/N	HOUSING PIN	DIM A
CAP3910-G201	10-24	7.00
CAP3910-G202	26-100	16.00

REV	DATE	MODIFICATION DESCRIPTION	CHANGE	OPERATION	DRAW	DATE	SCALE	PART NO.
A4	2018/05/04	Modify	---	OPERATION	Ding	2018/05/04	1:1	3910-PXXX-082MXXWR1
A3	2018/04/17	CAP Modify	---	x.X \pm 0.40	CHECK	DATE	UNIT mm	TITLE: Δ 1.27Pitch SDC CONNECTORS MALE "E"TYPE H=8.20mm(TYPE Q)
A2	2017/12/29	Modify	---	x.XX \pm 0.25	APPROVE	DATE	SIZE A4	Customer NO.
A0	2017/08/28	NEW	---	x.XXX \pm 0.15			SHEET 1/1	
				Angle \pm 3'			PROJ. ϕ	
				DIM TOL				